

smart chiller SC6



dado lab



smart chiller SC6

Description

The SC6 is the upgraded version of the SC5 smart chiller, twice efficient and powerful than before. Efficient, ergonomic, versatile, easy to transport and to operate : those were the targets we wanted to achieve during the development.

This chiller has a double function, it can be used as cooling bath for the impingers train and/or as chiller with recirculation capabilities for the the micropollutants condensation device (PCDD/PCDF, Heavy Metals etc).

Thanks to wide internal bath, it's possible to place a complete impingers train inside the wide tank and use it for long term sampling operations, without the need of fresh ice.

The liquid recirculation feature is used to keep uniform the bath temperature, avoiding, at the same time, the water to freeze, even when the cooling temperature is very low.

The recirculation pump has an ON/OFF button to avoid its operation when not needed.



The SC6 can be used as water chiller when ice or available or its use isn't practical.

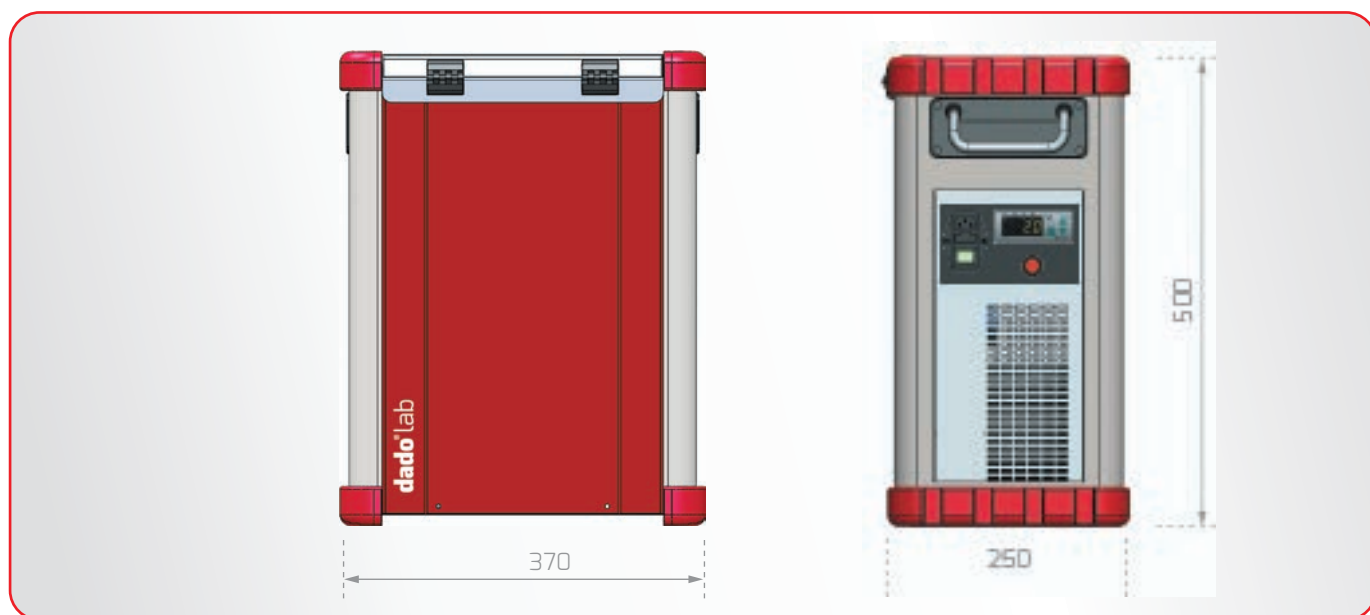
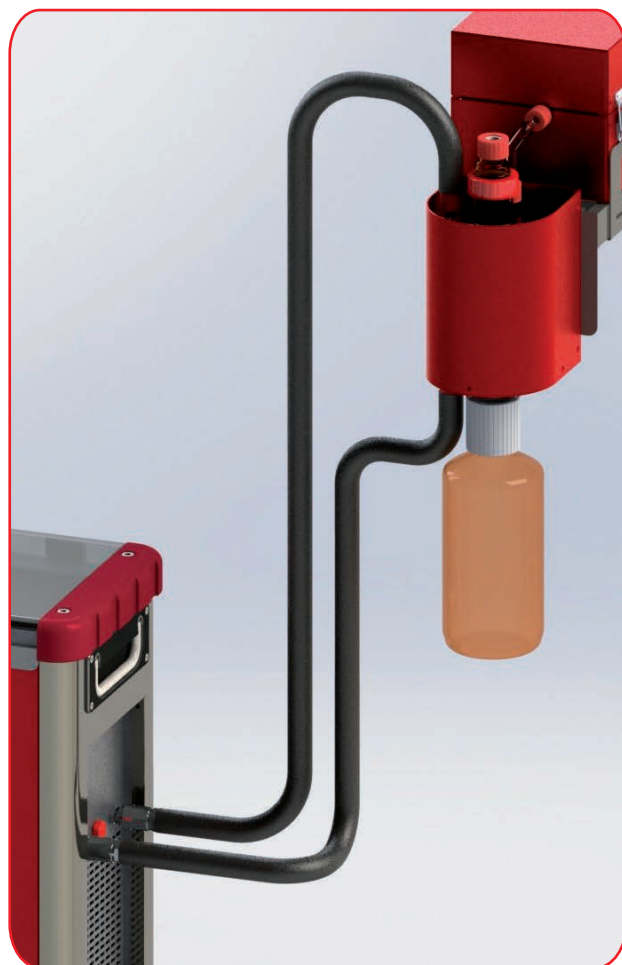
Thanks to its powerful refrigeration group, it is now possible to achieve high refrigeration performances just using water.

During the operation, the liquid level is always visible and the recirculation pump is protected against solids.

Filling and emptying operations of the bath are simple and easy, no particular tools or funnels are required. Just disconnect one tube and use the pump to empty the tank.

Main Characteristics

- Double operation mode
- Internal cooling bath for impingers
- Water chiller for micropollutants condensation devices
- Low weight and small sizes, rugged and easy to transport
- No anti-freezing liquid needed
- High flowrate recirculation
- Quick connectors
- Digital thermoregulator with programmable set point and temperature indicator



SC6 Dimensions (mm)

Technical Characteristic

Refrigerator power: 2360 Btu/h

Recirculation pump flowrate: 15 lt/min@1.5 meters difference in height

Bath temperature: Preset on optimal values

Bath size: 370 x 250 x 500 mm (L x P x H)

Operation temperature : -10 ÷ 43°C @ 95% UR

Stock temperature : -10 ÷ 50°C 95% UR

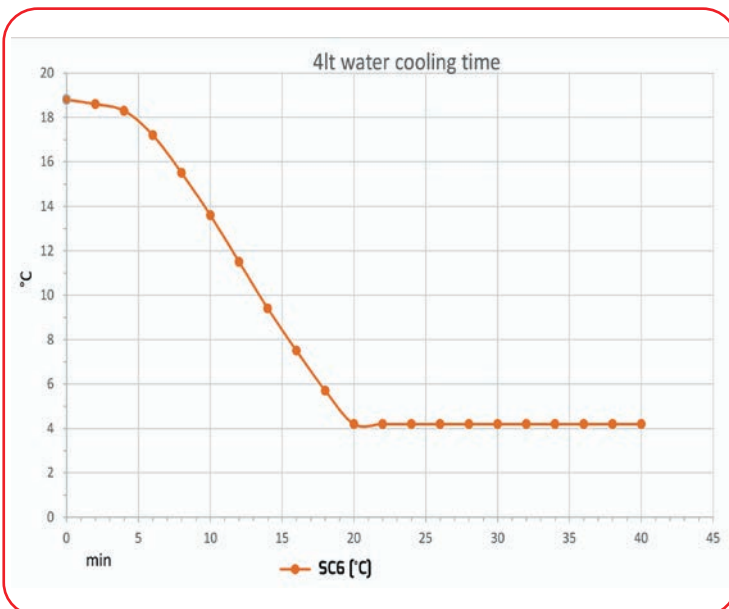
Power supply: 220 Vac ±10% 50/60Hz

Power absorption: 600 watts

Used Materials: Steel and Aluminum

Liquid loop connections: quick connectors

Size and weight: 370x250x500 mm (LxPxH) - 16 kgs



Standard Supply and accessories

- 101 103 1002 SC6 Standard supply :
- insulated connection tubes
 - quick connectors
 - test and calibration report
 - Power cord
 - User Manual

- 101 103 2002 Foam and support for 500 cc impinger

Glass Impingers

Depending on the application, Dado lab can supply impingers made of different materials, sizes and types.

Glass is the most common material used for the impingers and are suitable for almost any application for both "main stream" and "side sampling application". Easy to clean and inert to most of compounds, glass impingers are available in 500 cc and 250 cc versions.

Beside volume, impingers are available also as free tube, tube with plate or with frit (Impinger Type A). Type A impingers are used for the determination of NOx/SOx or HCl/HF with a constant flow sampling line.

<u>101 103 2010</u>	<u>500cc Free tube Impinger</u>
<u>101 103 2011</u>	<u>500cc Plate Impinger</u>
<u>101 103 2012</u>	<u>GL25/GL18 elbow connector</u>
<u>101 103 2013</u>	<u>90° Outlet gas connector</u>
<u>101 103 2015</u>	<u>250cc Derived line Impinger</u>
<u>101 103 2016</u>	<u>Type "A" Impinger</u>



Polycarbonate Impingers

Glass is the conventional material for impinger but its fragility, and risk for safety of the technicians, can be sometime a problem.

For those applications, where no chemical determination has to be carried out on the condensated liquid, Dado lab realized particular impingers with main body realized in practical and transparent polycarbonate.

The advantages of this solution are the extreme resistance to shocks granted by this material, which decrease the risk of injuries of the technician, and transparency.

To increase the bubble generation, it's possible to install an interchangeable polyethylene porous septum. When the septum is exhausted, just replace it without having to change the whole internal body, like for the glass impingers.

<u>101 103 2017</u>	<u>500cc Polycarbonate Impinger</u>
<u>101 103 2018</u>	<u>250cc Polycarbonate Impinger</u>
<u>101 103 2020</u>	<u>Pack of 5 porous septum</u>



Polyethylene Impingers

Specifically made for Fluorides determination in accordance to EN15713 standard, the PE impingers can be implemented in the isokinetic sampling line with side sampling configuration.

<u>101 103 2014</u>	<u>250cc Polyethylene Impinger</u>
---------------------	------------------------------------